



Fielding Road, London, W4
Guide Price £1,250,000

WHITMAN & CO.
SALES · LETTINGS · COMMERCIAL



A rare opportunity to purchase this original period property, which is ideally located in the Bedford Park area, offering close proximity to numerous amenities.

The property includes four bedrooms, a bathroom, a large entrance hall, a 31' through reception room, a fitted kitchen, a cloakroom/shower room, a host of original features, and a lovely 43' private garden.

Situated on this extremely sought-after tree-lined residential road. Offering close proximity to Turnham Green tube station and the extensive range of shops, bars and restaurants on Chiswick High Road. No onward chain.



Fielding Road, W4

Approximate gross internal area

143.53 sq m / 1545 sq ft

(Including Eaves Storage)

Eaves Storage : 9.41 sq m / 101 sq ft

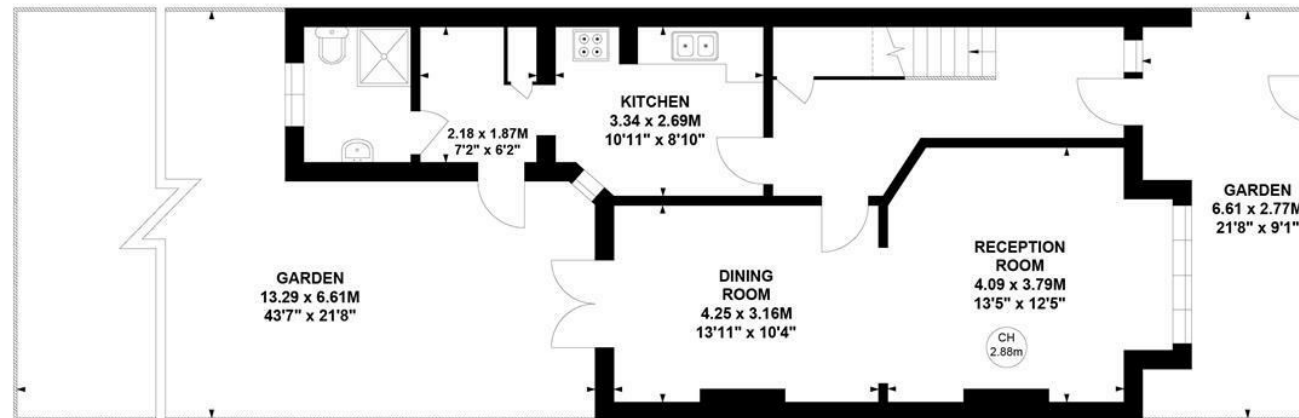
Key :

CH - Ceiling Height



First Floor

Second Floor



Ground Floor

Not to scale, for guidance only and must not be relied upon as a statement of fact.

All measurements and areas are approximate only

- Pretty period property
- Four beds/two baths
- 31' Through reception room

- Sought after residential road
- 43' Private Garden
- No onward chain

Tenure - Freehold
Local Authority - Ealing
Council Tax - Band G

